



KEYTEC, INC.

A global leader of touch-interactive technology since 1987.



520 Shepherd Drive, Garland TX 75042, USA Tel 1-800-624-4289 (US toll free) or 1-972-272-7555 Fax 972-272-7501 Email sales@magictouch.com

OPTIR Touch User's Manual (IRF Model)



Contents:

1. Accessories Package
2. Mounting Procedure
3. Driver Installation
4. Touch Screen Functions
5. Settings and Options
6. Troubleshooting and Technical Support



1. Accessories Package:

1-1 Accessories:

			□	□	□
	SIZE		26''~37''	40''~47''	52''~65''
Item	Description	Picture	Qty	Qty	Qty
1	Adapter DC 5.5V 2.0 A		1	1	1
2	Screw size 3*4 mm (Frame mounting used)		24+2 pcs <i>(2 pcs for backup used)</i>	24+2 pcs <i>(2 pcs for backup used)</i>	24+2 pcs <i>(2 pcs for backup used)</i>

1-2 View

Front View



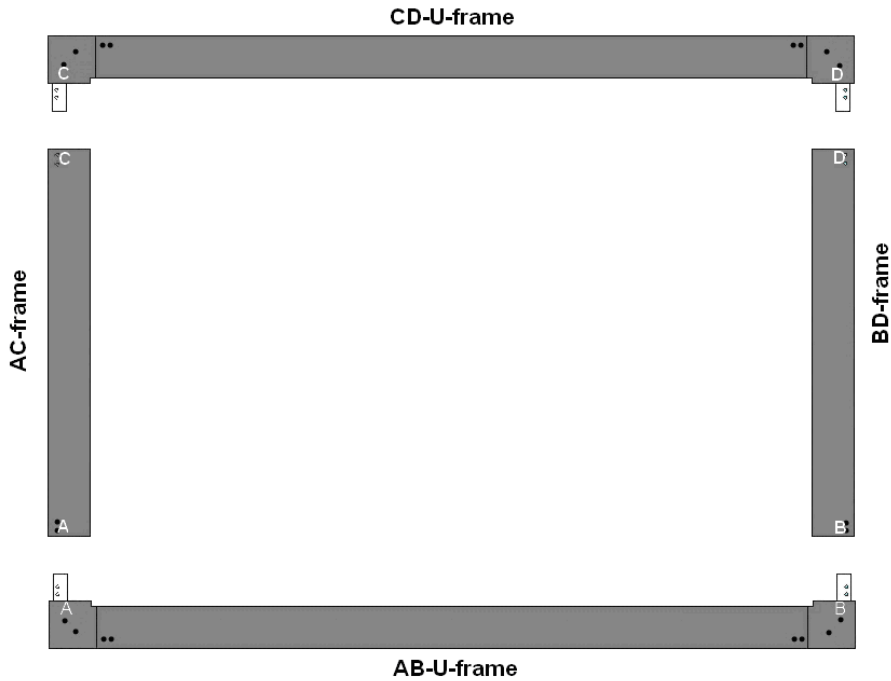
Rear View



2. Assembling Procedure:

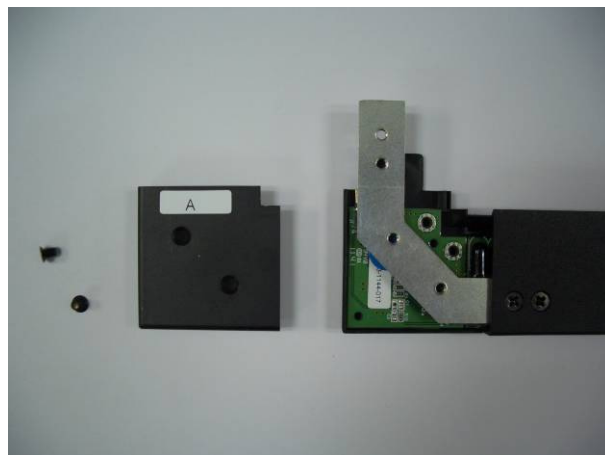
2-1 Introduction

4 items of framed segments: 1. AB-U-frame 2. CD-U-frame 3. AC-frame 4. BD-frame:
4 items of corner units: A, B, C, D



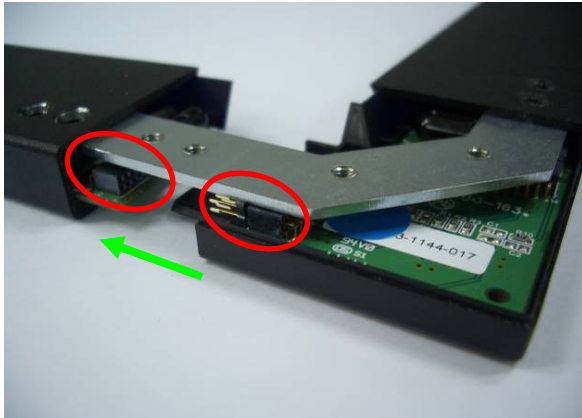
2-2 Assembling Procedure

1). It is recommended to remove the cover of corners and check if all pins are connected well (as shown below).



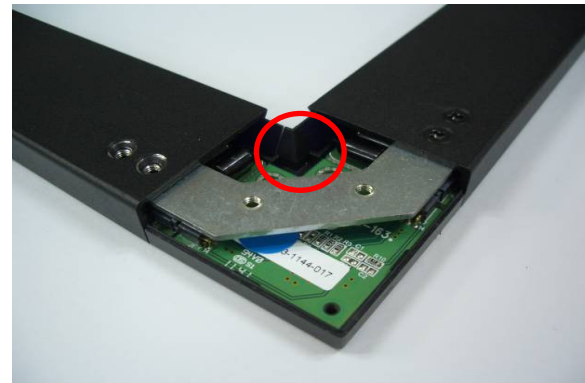
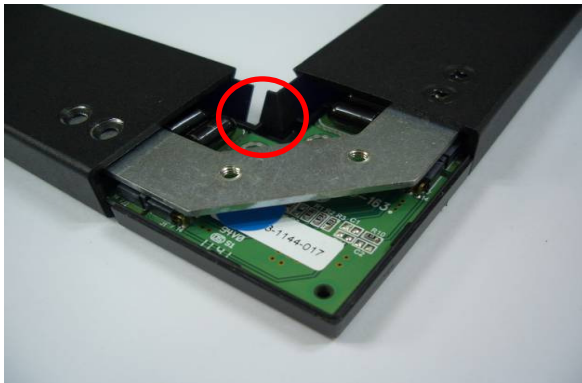
2). Assemble AC-frame and AB-U-frame

- a. Slightly pull out the PCBA in A-point of AC-frame
- b. Connect A-point of AC-frame and A-point of AB-U-frame; be sure that pins on two connectors are well connected.



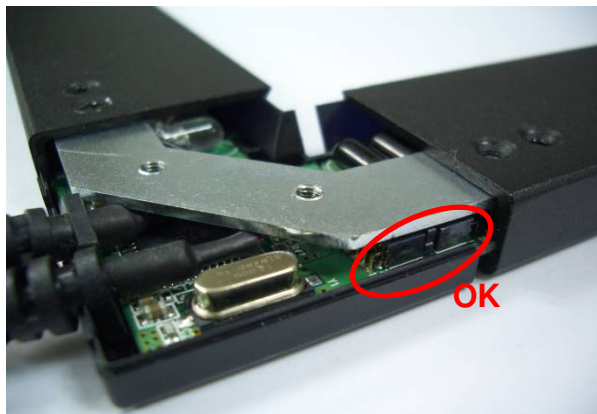
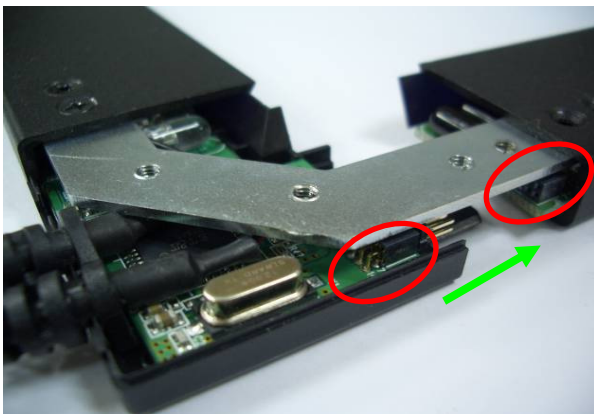
- o **Important Notice:** It is extremely crucial that connectors are connected corresponding to the labels, and be sure to check pins for proper alignment. Improper connection will cause malfunction and PCBA will burn-out.

- c. Slide down the filters from one side to another as shown in the picture, so that the LED sensors are fully covered by the filters.

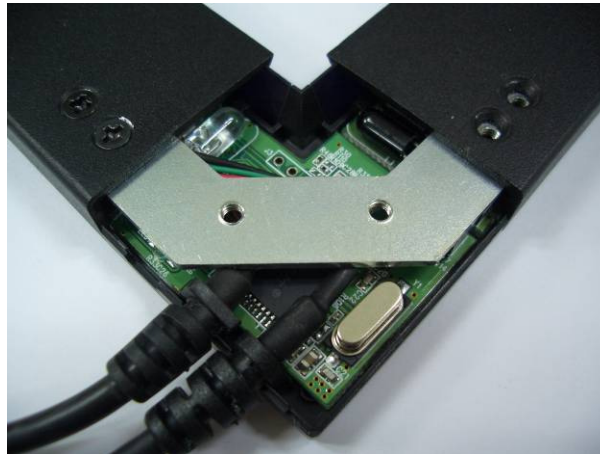


3). Assemble BD-frame and AB-U-frame (similar as above)

- a. Slightly pull out the PCBA in B-point of BD-frame
- b. Connect B-point of BD-frame and B-point of AB-U-frame, and be sure that connectors are well connected.

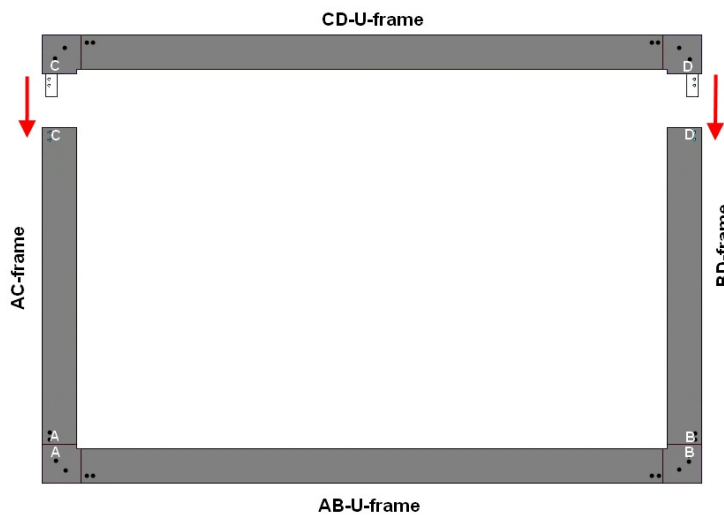


c. Again, slide down the filters from one side to another as shown in the picture, so that the LED sensors are fully covered by the filters.

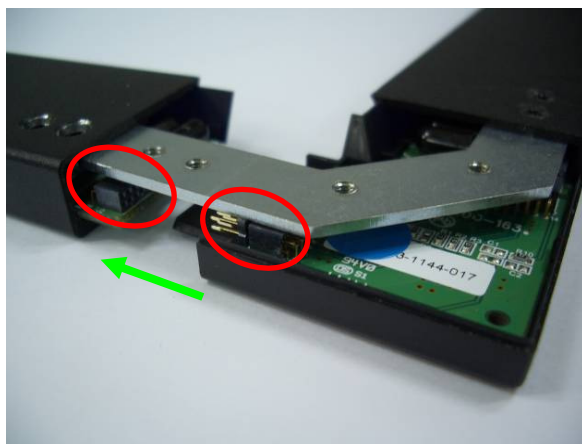


4). Assemble CD-U-frame

a. Refer to the picture as below. Mount C-point & D-point of CD-U-frame into C-point of AC-frame & D-point of BD-frame.

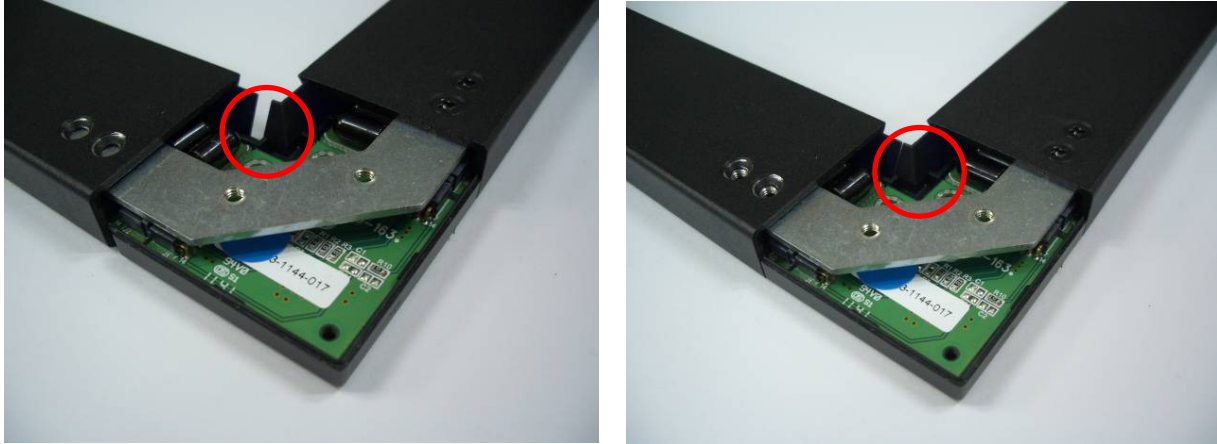


b. Connect both sides and ensure all pins are well connected.



- **Important Notice:** It is extremely crucial that connectors are connected corresponding to the labels, and be sure to check pins for proper alignment. Improper connection will cause malfunction and PCBA will burn-out.

c. Slide down the filter in one side to another one as picture shown.



5). Put back the covers of the corners for AB-U-frame & CD-U-frame.

6). Tighten all the screws in 4 corners at rear side as shown below.



3. Driver Installation:

3-1. A USB controller and Windows 2000/XP/Vista/7 driver are included. Mac drivers are included only when the Mac version is purchased.

3-2. Insert the driver CD into CD Rom.

3-3. Click to select USB controller, then click install button.

3-4. When prompted for plug into the controller, plug the controller into USB port. Windows shows "found new hardware" message. Click OK to continue.

3-5 When prompted for restart the Windows, click OK to reboot.

3-6. After Windows is rebooted, two new icons are created on desktop.



Touch USB



Swap Button

At this point, the LED on the controller should be on and IR screen should respond to touch, but the position of touch is not accurate until the screen is calibrated. If the IR screen is not responding to touch, unplug and re-plug in the USB cable to re-initiate the controller.

3-7. Double click Touch USB icon to open touch control panel.

3-8. Click the calibration button, choose either 5 or 25 point calibration then click 'GO!' Touch the center of each circle and hold for 2 seconds then lift off to complete the calibration.

3-9. Repeat the calibration if necessary. Click OK to close the window.

3-10. If you have Vista or Windows 7 OS, there are the options of using touch screen as mouse or tablet by clicking the desired button in Touch USB control panel. In tablet mode, the touch response is usually slower, but Windows 7 dual touch feature can be performed.

4. Touch Screen Functions:

4-1. Screen touched = left mouse button clicked

4-2. Touch down and drag = left mouse button held down and dragged

4-3. Tap twice = left mouse button double clicked

4-4. Swap Button: Select 'once' to right-click for one touch, or 'always' to always right-click. Select minimize to reduce to system tray. Click in tray as a shortcut!

5. Settings and Options:

5-1. **Mouse speed:** Control the tracking speed of mouse cursor.

5-2. **Double click speed:** Control the time interval between two clicks to activate a double click. Slow speed makes double click easier. Test the double click by tapping the K logo twice. If successful, the logo rotates.

5-3. **Lift Off:** When this option is enabled, the click is activated when touch is lifted away from the touch screen.

This mode is very useful for clicking hyperlinks, such as Internet browser, or programs that use "mouse-over" function. However, it is impossible to drag or draw in this mode.

5-4. **Beep:** Enable/disable an audio beep when touching the touch screen.

5-5. **Move only:** Touching and dragging only moves the mouse cursor without performing a click. This option is for those who have an optional **click pen** (currently unavailable).

5-6. **Hide cursor:** Makes the cursor invisible (preferred for some applications).

5-7. **Uninstall:** Click to uninstall the driver.

5-8. **Default setting:** Return the speeds and options to the original settings.

6. Troubleshooting and Technical Support:

6-1. Make sure the driver was installed first before the USB controller is plugged into a USB port.

6-2. Make sure the power supply is plugged into the controller (next to USB cable connection).

6-3. Make sure the controller is always plugged into the same USB port.

6-4. Make sure the sensors are leveled, and the corners are right angled.

If the problem persists, contact KEYTEC'S tech support:

Email to tech@magictouch.com or call 972-272-7555 (8:30AM to 5:00PM CST M-F). Must obtain an authorized RMA (return merchant authorization) from tech support department before returning the product for service.